



*Experts in Networking*

## CCNA, CCNP, CCIE, Practice lab

### Contents

1. Introduction
2. Lab Access
3. Lab Topology
4. Lab etiquette
5. Lab Support

### 1. Introduction

The purpose of this guide is to explain the process of accessing NCAT's live practice lab. Please note that this is actual Cisco equipment and not a software simulation. This lab is populated with hardware totalling £5000 worth

4 x 2800 Routers  
2 x 3550 Switch  
2 x 2950 Switch

Lab access time is currently FREE and is available to any of our customers, please consult your NCAT account manager to book a time slot. Time slots are for a 24 hour period from midnight to midnight for weekday or for the whole weekend. This is on a first come, first served basis.

### 2. Lab Access

To access the NCAT Practice lab please use any recommended telnet emulation program (please see our website for a downloadable telnet application) or from a command prompt.

Telnet to the following IP address 89.206.211.192

A screenshot of a Windows command prompt window titled 'cmd.exe'. The window shows the following text: 'Microsoft Windows XP [Version 5.1.2600] (C) Copyright 1985-2001 Microsoft Corp. C:\WINDOWS\system32>telnet 89.206.211.192\_'. The cursor is positioned at the end of the command line.

```
cmd.exe
Microsoft Windows XP [Version 5.1.2600]
(C) Copyright 1985-2001 Microsoft Corp.
C:\WINDOWS\system32>telnet 89.206.211.192_
```

You will be prompted for a username and password this will be given to you via email from your NCAT account manager.



Experts in Networking

```
cmd.exe
*****
*          *          *          *          *          *
*  *      *  *      *  *      *  *      *  *      *
*  *      *  *      *  *      *  *      *  *      *
*  *      *  *      *  *      *  *      *  *      *
*  *      *  *      *  *      *  *      *  *      *
*  *      *  *      *  *      *  *      *  *      *
*  *      *  *      *  *      *  *      *  *      *
*  *      *  *      *  *      *  *      *  *      *
*  *      *  *      *  *      *  *      *  *      *
*  *      *  *      *  *      *  *      *  *      *
*  *      *  *      *  *      *  *      *  *      *
*  *      *  *      *  *      *  *      *  *      *
*  *      *  *      *  *      *  *      *  *      *
*  *      *  *      *  *      *  *      *  *      *
*****
Authorized Access only, If you want access to our remote lab
Please contact your account manager on 0370 350 4000

For information on the lab topology please consult our web site
www.ncat.co.uk

***** CCNA/CCNP Practice Lab *****
Username:
```

From there you will be taken to a menu to access the individual equipment. You can also reset a connection should the connection fail at any time.

```
Telnet 89.206.211.192
***** CCNA/CCNP Practice Lab *****
***** MENU *****

To exit a device at any time and return to this menu press
<CTRL>+<SHFT>+<6> then <X>.

Select from the following menu to either connect to a device
or Reset a console connection.

*****
ITEM#      DEVICE NAME
-----
1          Switch 1
2          Switch 2
3          Switch 3
4          Switch 4
5          Router 1
6          Router 2
7          Router 3
8          Router 4
A          Reset Connection to Switch 1
B          Reset Connection to Switch 2
C          Reset Connection to Switch 3
D          Reset Connection to Switch 4
E          Reset Connection to Router 1
F          Reset Connection to Router 2
G          Reset Connection to Router 3
H          Reset Connection to Router 4
I          Exit
          To exit menu

CPlease enter selection: _
```

Make your selection i.e. press 1 to access 'Switch 1' you will then be connected directly to the console port of 'Switch1'.

```

Telnet 89.206.211.192
***** CCNA/CCNP Practice Lab *****
***** MENU *****

To exit a device at any time and return to this menu press
<CTRL>+<SHFT>+<6> then <X>.

Select from the following menu to either connect to a device
or Reset a console connection.

*****
ITEM#      DEVICE NAME
-----
1          Switch 1
2          Switch 2
3          Switch 4
4          Router 1
5          Router 2
6          Router 3
7          Router 4
8          Reset Connection to Switch 1
9          Reset Connection to Switch 2
A          Reset Connection to Switch 4
B          Reset Connection to Router 1
C          Reset Connection to Router 2
D          Reset Connection to Router 3
E          Reset Connection to Router 4
          Exit
          To exit menu

Please enter selection: 1
Trying sw1 (10.10.10.10, 2001)... Open
  
```

You will now need to **press <return>** at this stage start up console session.

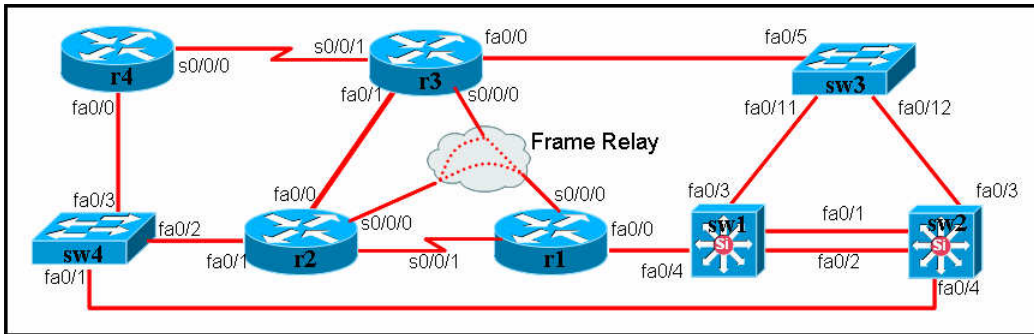
Once you access any individual router or switch to gain access back to the menu system again simply key “<shift><control><6> then x”.

From there you can access any of the other equipment. However to go back into a router with an existing connection (one you have made previously) you will need to reset the connection from the menu first. You may find that you have to reset the connection two or three times, simply key the corresponding letter (a-e) and confirm.

To completely disconnect from our menu system simply enter “exit” from the menu (see last option).

### 3. Lab Topology

This diagram shows all the physical connections. You can alter the topology simply by shutting down various interfaces.



## 4. Lab Etiquette

Please follow these few simple rules so that others may benefit from this free service.

1. Please erase all config's from the equipment when you have finished your lab period.
  - Switches commands are:-  
'erase start'  
'delete vlan.dat' (switches should be in VTP transparent mode first)  
'reload'
  - Routers commands are:-  
'erase start'  
'reload'
2. During the Lab please use "cisco" for all passwords

## 5. Lab Support

Technical support for this lab is only available Monday - Friday 9am – 5pm, excluding bank holidays. Simply use the "Live Chat" option on our website.

For support or issues with the LAB please email the instructors at [questions@ncat.co.uk](mailto:questions@ncat.co.uk). However because of the nature of the Instructor role it may not be possible to answer any questions for up to 48hrs.